

Impact Bed



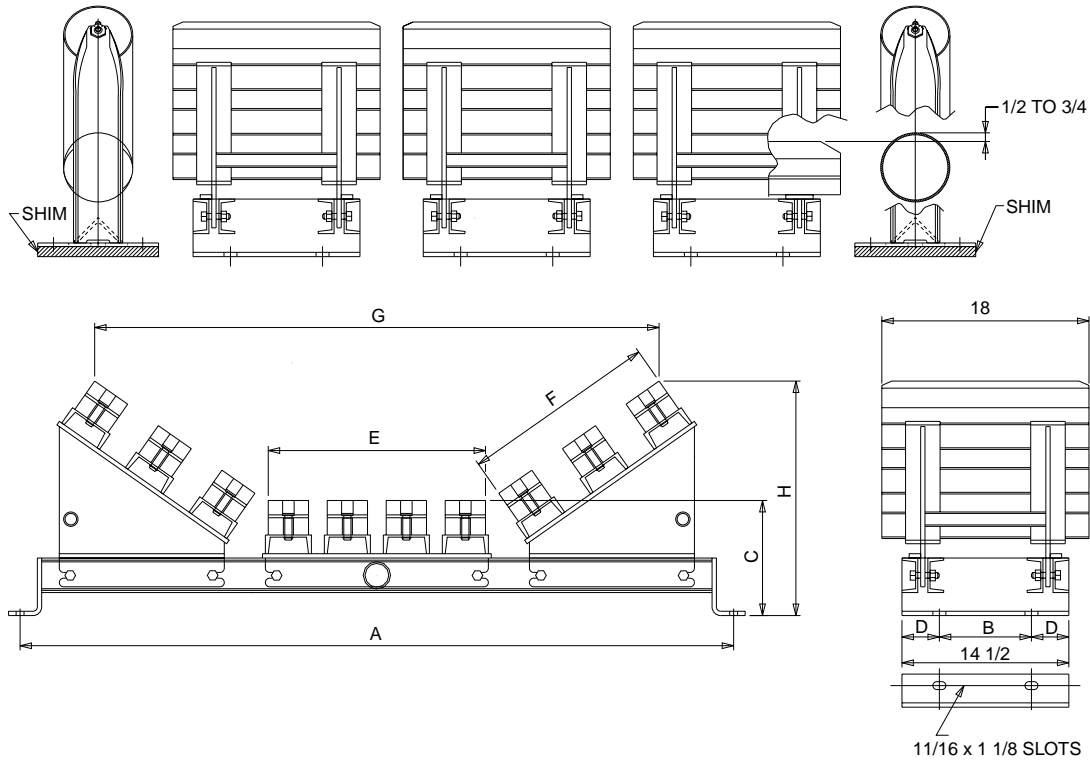
Slide Seal™



CONTINENTAL CONVEYOR
& EQUIPMENT COMPANY



Impact Bed



BW	20° IMPACT BED	35° IMPACT BED	45° IMPACT BED	DIMENSIONS							20°		35°		45°	
	PART NUMBER	PART NUMBER	PART NUMBER	A	B	C	D	E	F	G	H	G	H	G	H	
24	60A5574-24	60A5570-24	60A5591-24	33	6	9 1/4	4 1/4	8 7/8	9	26 3/4	12 3/4	24 5/16	14 9/16	20 7/8	16 9/16	
30	60A5574-30	60A5570-30	60A5591-30	39	7	9 5/8	3 3/4	10 7/8	9	30 3/8	13 1/8	27 15/16	14 7/8	24 1/2	16 15/16	
36	60A5574-36	60A5570-36	60A5591-36	45	7	9 5/8	3 3/4	12 7/8	11	36 1/8	13 13/16	33 3/16	16 5/8	29 5/16	18 3/8	
42	60A5574-42	60A5570-42	60A5591-42	51	7	9 5/8	3 3/4	14 7/8	13	41 15/16	14 1/2	38 1/2	17 3/4	34 3/16	19 13/16	
48	60A5574-48	60A5570-48	60A5591-48	57	8	10	3 1/4	16 7/8	15	47 11/16	15 1/2	43 3/4	19 1/4	39 3/16	21 9/16	
54	60A5574-54	60A5570-54	60A5591-54	63	8	10	3 1/4	18 7/8	17	53 7/16	16 3/16	49 1/16	20 7/16	43 13/16	23	
60	60A5574-60	60A5570-60	60A5591-60	69	8	10	3 1/4	20 7/8	19	59 1/8	16 7/8	54 5/16	21 9/16	48 11/16	24 3/8	
66	60A5574-66	60A5570-66	60A5591-66	75	8	10 3/8	3 1/4	22 7/8	21	64 7/8	17 15/16	59 9/16	23 1/16	53 1/2	26 3/16	
72	60A5574-72	60A5570-72	60A5591-72	81	8	10 3/8	3 1/4	24 7/8	23	70 11/16	18 5/8	64 7/8	24 1/4	58 3/8	27 5/8	

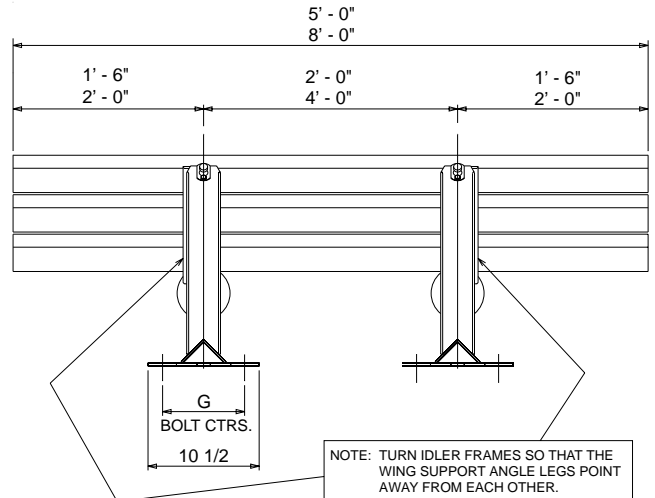
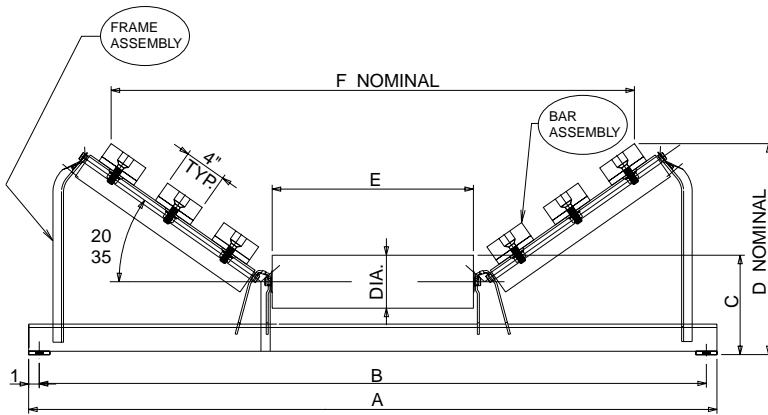
The Continental Impact Bed extends belt life and reduces downtime by supporting the conveyor belt and cushioning it against the shock of heavy loads and impact. Its modular design allows multiple units to be closely fitted to form the bed length needed. As shown in the picture below, the Continental Impact Bed is also offered with an impact center roll. Consult factory for part numbers..



Impact Bed (3 Shown)



Impact Bed with Impact Center Roll (1 Shown)



		FRAME ASSEMBLY			BAR ASSEMBLY								5" DIA.			6" DIA.		
BW	DEG.	QTY.	5" DIA.	6" DIA.	QTY.	5 FT SECTION	8 FT SECTION	A	B	E	G	C	D	F	C	D	F	
18	20°	2	60AK11153-18	60AK11163-18	2	60AK11118-60	60AK11118-96	29	27	7 1/8	6 1/4	8 5/8	10 11/16	18 3/4	9 1/8	11 3/16	18 3/8	
18	35°	2	60AK11119-18	60AK11164-18	2	60AK11118-60	60AK11118-96						12	16 15/16		12 7/16	16 3/8	
24	20°	2	60AK11153-24	60AK11163-24	4	60AK11118-60	60AK11118-96	35	33	9	6 1/4	8 5/8	11 3/4	26 1/2	9 1/8	12 3/16	26 1/8	
24	35°	2	60AK11119-24	60AK11164-24	4	60AK11118-60	60AK11118-96						13 3/4	23 15/16		14 1/8	23 3/8	
30	20°	2	60AK11153-30	60AK11163-30	4	60AK11118-60	60AK11118-96	41	39	11	6 1/4	9	12 5/8	31 3/16	9 1/2	13 1/16	30 7/8	
30	35°	2	60AK11119-30	60AK11164-30	4	60AK11118-60	60AK11118-96						14 15/16	28 5/16		15 5/16	27 3/4	
36	20°	2	60AK11153-36	60AK11163-36	4	60AK11118-60	60AK11118-96	47	45	13	6 1/4	9	13 5/16	36 15/16	9 1/2	13 3/4	36 5/8	
36	35°	2	60AK11119-36	60AK11164-36	4	60AK11118-60	60AK11118-96						16 1/8	33 9/16		16 1/2	33	
42	20°	2	60AK11153-42	60AK11163-42	6	60AK11118-60	60AK11118-96	53	51	15	6 1/4	9	14	42 11/16	9 1/2	14 7/16	42 3/8	
42	35°	2	60AK11119-42	60AK11164-42	6	60AK11118-60	60AK11118-96						17 1/4	38 7/8		17 5/8	38 5/16	
48	20°	2	60AK11153-48	60AK11163-48	6	60AK11118-60	60AK11118-96	59	57	17	7	9 3/8	15 1/16	48 1/2	9 7/8	15 1/2	48 1/8	
48	35°	2	60AK11119-48	60AK11164-48	6	60AK11118-60	60AK11118-96						18 3/4	44 1/8		19 3/16	43 9/16	
54	20°	2	60AK11153-54	60AK11163-54	6	60AK11118-60	60AK11118-96	65	63	19	7	9 3/8	15 11/16	54 1/4	9 7/8	16 3/16	53 7/8	
54	35°	2	60AK11119-54	60AK11164-54	6	60AK11118-60	60AK11118-96						19 15/16	49 7/16		20 5/16	48 13/16	
60	20°	2	60AK11153-60	60AK11163-60	8	60AK11118-60	60AK11118-96	71	69	21	7	9 3/8	16 3/8	60	9 7/8	16 7/8	59 5/8	
60	35°	2	60AK11119-60	60AK11164-60	8	60AK11118-60	60AK11118-96						21 1/16	54 11/16		21 7/16	54 1/8	

The Continental Slide Seal™ is designed to fit into your loading area when there is minimal impact. It is a simple and cost effective way to provide continuous support of your conveyor belt against the skirting material, resulting in a positive seal. By utilizing two standard troughing idler frames with center rolls and UHMW/steel support bars with support mounting brackets, this unit will provide a positive seal in your loading area with reduced belt drag.



Slide Seal™ Assembly



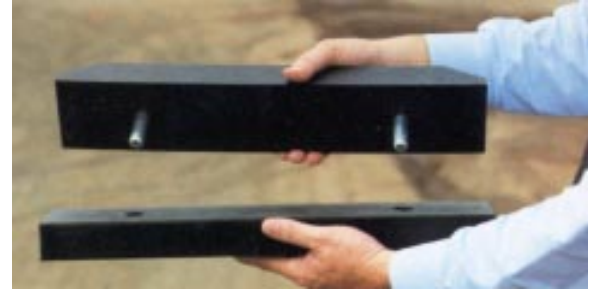
Slide Seal™ Assembly Components



Impact Bed

Replacement Parts

IMPACT BED REPLACEMENT BARS			
BW	PART NUMBER	SIZE OF BARS	WEIGHT lbs.
ALL	60KU9905-18	UHMW 3 1/2" X 1 1/2" X 18"	3
	60KU9906-18	RUBBER 3 1/2" X 1 1/2" X 18"	4



UHMW & Rubber



Slide Seal™

Replacement Parts

WING SUPPORT INSERT					
5" DIA., 20 OR 35 DEGREE			6" DIA., 20 OR 35 DEGREE		
BW	PART NUMBER	WEIGHT	BW	PART NUMBER	WEIGHT
18	60DK11117-0702	3	18	60DK11179-0702	3
24	60DK11117-0900	4	24	60DK11179-0900	4
30	60DK11117-1100	5	30	60DK11179-1100	5
36	60DK11117-1300	5	36	60DK11179-1300	5
42	60DK11117-1500	6	42	60DK11179-1500	6
48	60DK11117-1700	7	48	60DK11179-1700	7
54	60DK11117-1900	8	54	60DK11179-1900	8
60	60DK11117-2100	9	60	60DK11179-2100	9



Wing Support Insert

UHMW REPLACEMENT BARS ONLY			
LENGTH	PART NUMBER	SIZE OF BARS	WEIGHT lbs.
5'	60KK11114-60	UHMW 4" X 1 1/2" X 60"	12
8'	60KK11114-96	UHMW 4" X 1 1/2" X 96"	20



Slide Seal™ Bar Assembly

SLIDE SEAL BAR ASSEMBLY		
LENGTH	PART NUMBER	WEIGHT lbs.
5'	60AK11118-60	47
8'	60AK11118-96	75

ISO 9001

Certificate No. 002586



**CONTINENTAL CONVEYOR
& EQUIPMENT COMPANY**

P.O. Box 400 • Winfield, AL 35594

205/487-6492 • FAX: 205/487-4233

WEBSITE: www.continentalconveyor.com

E-MAIL: info@continentalconveyor.com



**The World Leader in Conveyors
and Conveyor Technology**

Continental products pictured, described, or listed in this publication are illustrative only. Application and use of these products must be in accordance with applicable codes and regulations and must be arranged and/or provided with covers or other guards where necessary to assure safety of personnel.